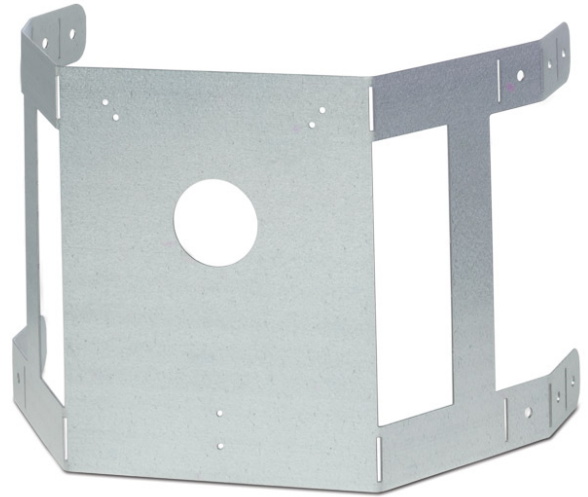




## FDD710MB

Mounting bracket for FDD710, irregular duct shapes

The FDD710MB allows the FDD710 duct detector to be mounted on irregular shaped or circular ducts. Four tabs are easily bent to adapt to the shape of the duct. The FDD710 then mounts on the flat surface.



### Standard Features

- Four tabs adapt to the shape of the duct



# FDD710MB

Mounting bracket for FDD710, irregular duct shapes

## Specifications

---

## Ordering Information

Part No.	Description
FDD710MB	Mounting bracket for FDD710, irregular duct shapes



[www.gesecurity.net](http://www.gesecurity.net)

As a company of innovation, GE Security reserves the right to change product specifications without notice. For the latest product specifications, visit GE Security online or contact your GE Security sales representative.

IPS-FDD710MB-2007-08-22 15:07:44 [NOT RELEASED]