



FE110US

Eco Line mag 150 Kgf, unmonitored, surface mount

Product Overview

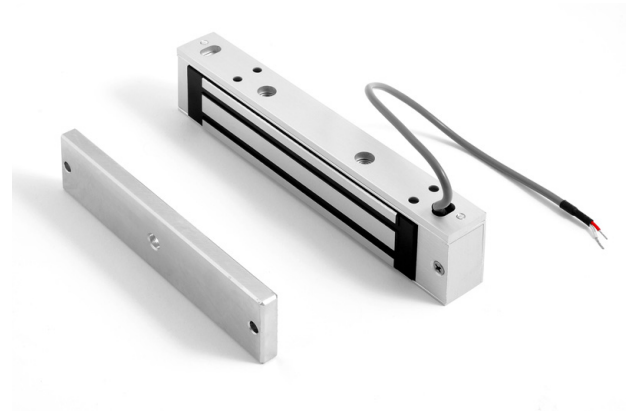
Eco Line mini magnetic lock. Surface mounting includes a quick mount bracket

Application

Internal non high security doors and security cabinets

Reliable security

This state of the art electro-magnetic locking device provides positive, instantaneous door control. Filler plates, angle brackets, and other mounting adapters are available to satisfy a wide range of door and frame types and conditions.



Standard Features

- 150 Kgf holding force
- Not monitored
- No residual magnetism
- 12/24 V dc jumper selectable operation
- Mounts easily with a minimum of tools

FE110US

Eco Line mag 150 Kgf, unmonitored, surface mount

Specifications

Mounting	Surface
Holding force	150 Kgf
Input voltage	12/24 VDC
Current draw	460 mA (+/- 2,5% @ 13,5 V)
Dimensions (W x H x D)	166 x 38 x 22 mm
Bi colour LED	No
Door status switch	No
Monitored changeover	No
Magnetic bond sensor	No

Ordering Information

Part No.	Description
FE110US	Eco Line mag 150 Kgf, unmonitored, surface mount
FE110ZL	L and Z Kit for Inward opening Doors for Eco Line Magnets (FE110 series)



www.gesecurity.net

As a company of innovation, GE Security reserves the right to change product specifications without notice. For the latest product specifications, visit [GE Security online](http://www.gesecurity.net) or contact your GE Security sales representative.

IPS-FE110US-2007-08-23 09:45:59 Released : 21.09.2005;